

## Washer f. sliding frame (D=15mm)

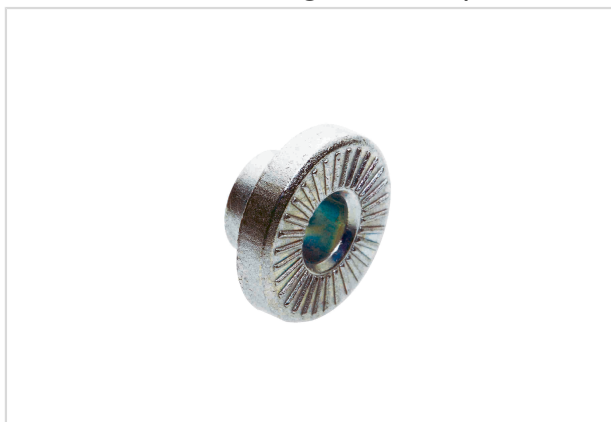


Image is for illustration purposes only. Please refer to product description.

Part number	09 14 000 9986
Specification	Washer f. sliding frame (D=15mm)
HARTING eCatalogue	<a href="https://b2b.harting.com/09140009986">https://b2b.harting.com/09140009986</a>

### Identification

Category	Accessories
Series	Han-Modular®
Type of accessory	Float washer

### Version

Details	To enable the Sliding Frame to be float mounted using standard M4 fixing screws
---------	---

### Technical characteristics

Floating tolerance	±3 mm
--------------------	-------

### Material properties

Material (accessories)	Zinc die-cast
RoHS	compliant
ELV status	compliant
China RoHS	e
REACH Annex XVII substances	Not contained
REACH ANNEX XIV substances	Not contained
REACH SVHC substances	Not contained
California Proposition 65 substances	Yes
California Proposition 65 substances	Lead Nickel



**Pushing Performance**  
Since 1945

## Specifications and approvals

Specifications	IEC 60664-1
	IEC 61984

## Commercial data

Packaging size	100
Net weight	0.01 g
Country of origin	China
European customs tariff number	79070000
GTIN	5713140194618
eCl@ss	27440291 Connector component (parts)